

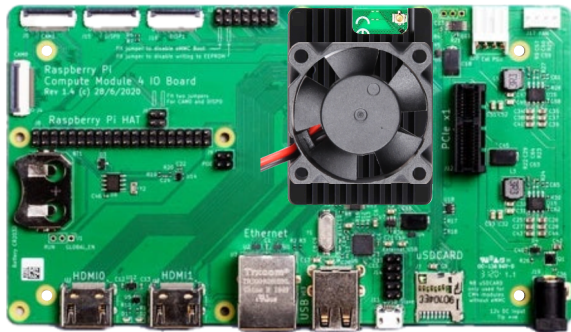
# Assembling your ZERO:

**Preparation:** Remove the protective tape attached to the oak base - if you don't do it prior to assembly, it will be very difficult to do it later on.



Place the thermal pads from inside the Heatsink pack onto the CPU of the Compute Module 4 board, as shown.

Attach the Heatsink to the Compute Module 4 using the screws in the Heatsink package as shown here. Ensure the alignment of the heatsink matches with the components on the board and that the raised sections of the heatsink line up with the same sized components. Please note the direction of the screws - do not be tempted to put the heads of the screws on top, or the next stage won't work!



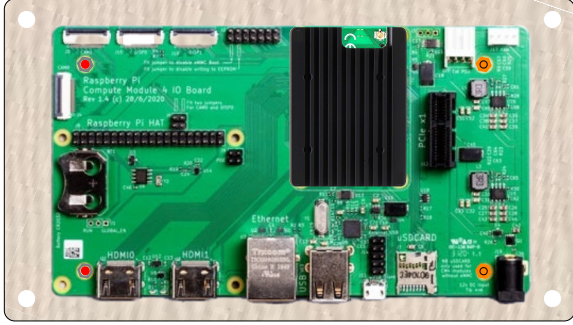
Once the heatsink is in place on the Compute Module 4, gently press it into place on the CM4IO board, ensuring the connectors (which are off-centre) line up perfectly. You may not hear a click, but you will feel it slot into place.

Onto the NVMe adaptor and drive: On the adaptor, remove the small black screw or the brown disc covering the **screw hole** marked 2280. Align the NVMe drive with the **slot** and the hole and push the connector into the NVMe drive socket. Use the screw to hold the NVMe drive into place with the 2280 hole.



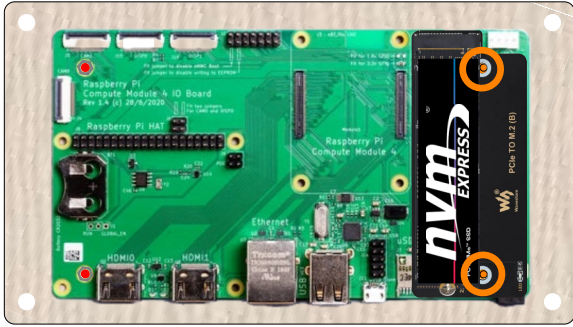


Push the four **M2.5 screws** up through the four inner holes on the oak base, and place the base on a flat surface with the machine screws pointing upwards.



Place the four **white plastic spacers** over the **M2.5 screws**. Now place the circuit board over the machine screws and hold in place with the two M2.5 nuts to the LEFT side holes, and the **brass stand offs** from the NVMe adaptor box over the RIGHT side holes. Carefully push the NVMe drive and adaptor into place in the **PCIe slot**, and use the small screws to hold it in place.

Your system is ready to go!



*A full case, Additional ribs and longer connector screws to accommodate HATS and other add ons, are available for purchase separately. We can supply GPIO header extenders, RTCs and active cooling solutions for your kit. Please contact us directly for information.*